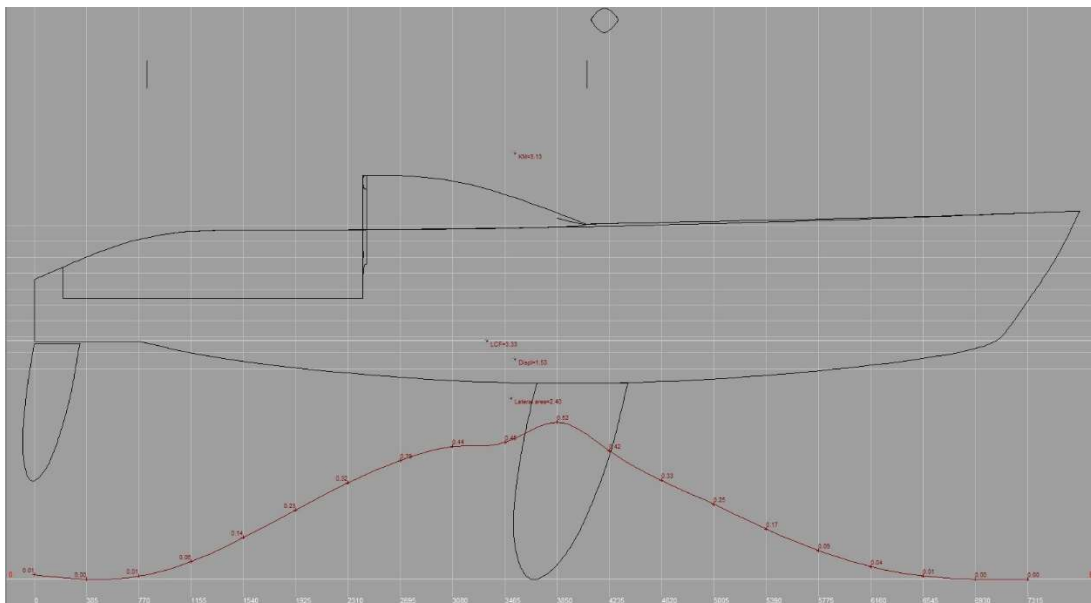


Quarter Tonner #04

Project : Quarter Tonner #04
Designer : Delta Consultants-P.Visser
Length over all : 7.786 m
Beam over all : 2.959 m
Design draft : 1.750 m
Midship location : 2.695 m
Water density : 1.025 t/m³
Appendage coefficient : 1.0000

Volume properties:

Displaced volume : 1.493 m³
Displacement : 1.530 ton
Total length of submerged body : 7.162 m
Total beam of submerged body : 2.149 m
Block coefficient : 0.0554
Prismatic coefficient : 0.5328
Vert. prismatic coefficient : 0.0975
Wetted surface area : 11.697 m²
Longitudinal center of buoyancy : 3.538 m
Longitudinal center of buoyancy : -0.011 %
Tranverse center of buoyancy : 0.000 m
Vertical center of buoyancy : 1.619 m



Quarter Tonner #04

Midship properties:

Midship section area	:	0.391 m ²
Midship coefficient	:	0.1040

Waterplane properties:

Length on waterline	:	7.077 m
Beam on waterline	:	2.149 m
Waterplane area	:	8.749 m ²
Waterplane coefficient	:	0.5683
Waterplane center of floatation	:	3.332 m
Y coordinate of DWL area CoG	:	0.000 m
Half entrance angle of DWL	:	7.167 degr
Transverse moment of inertia	:	2.254 m ⁴
Longitudinal moment of inertia	:	17.261 m ⁴

Initial stability:

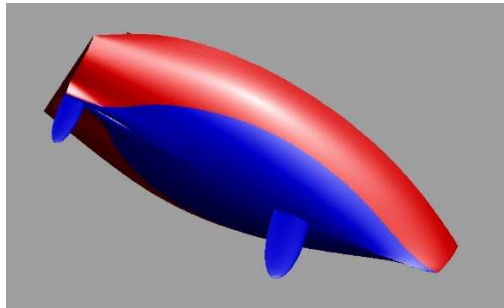
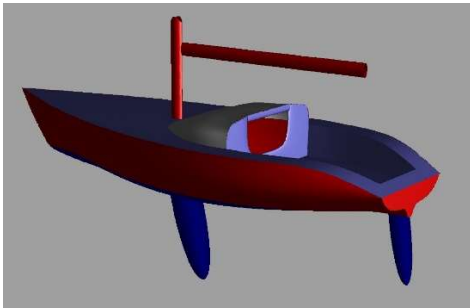
Vertical of transverse metacenter	:	3.128 m
Tranverse metacentric radius	:	1.510 m
Longitudinal transverse metacenter	:	13.181 m
Longitudinal metacentric radius	:	11.562 m

Lateral plane:

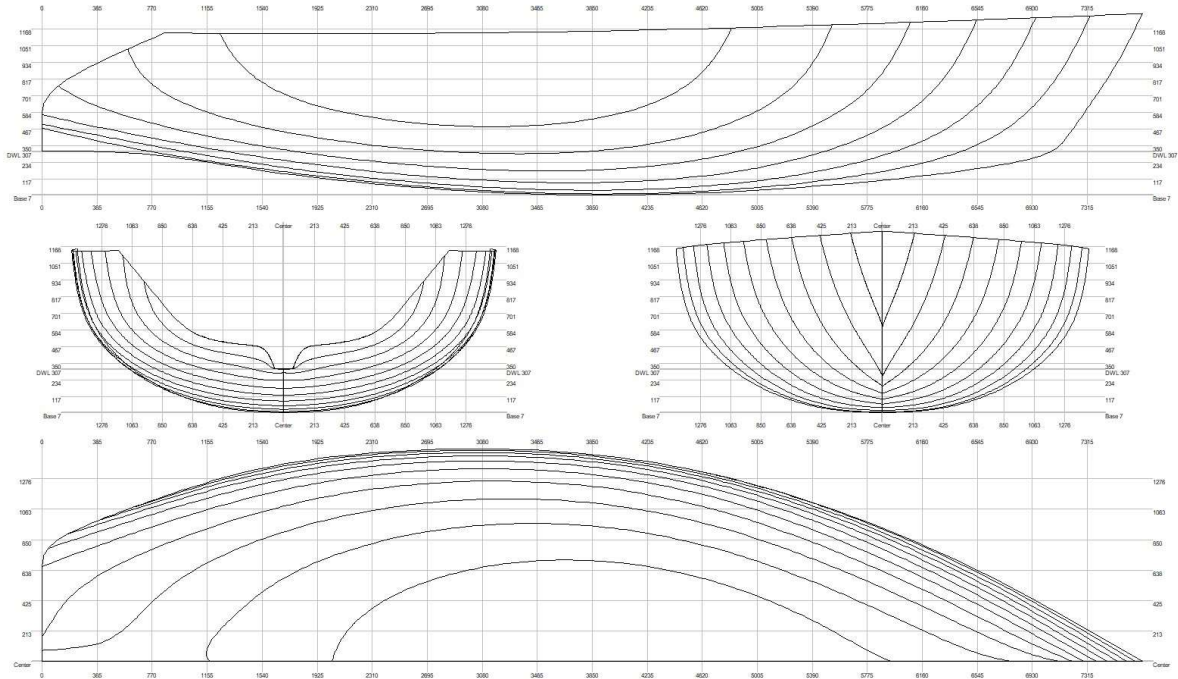
Lateral area	:	2.399 m ²
Longitudinal center of effort	:	3.512 m
Vertical center of effort	:	1.329 m

Hull characteristics above waterline:

Lateral wind area	:	5.600 m ²
Z coordinate of wind area CoG above DWL	:	0.452 m
Distance from bow to wind area CoG	:	2.694 m



Quarter Tonnage #04

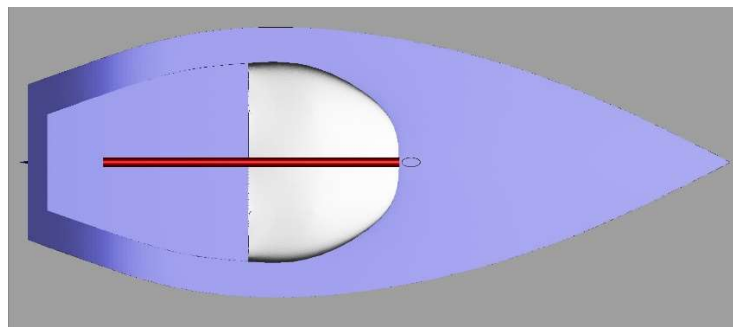


The following layer properties are calculated for both sides of the ship:

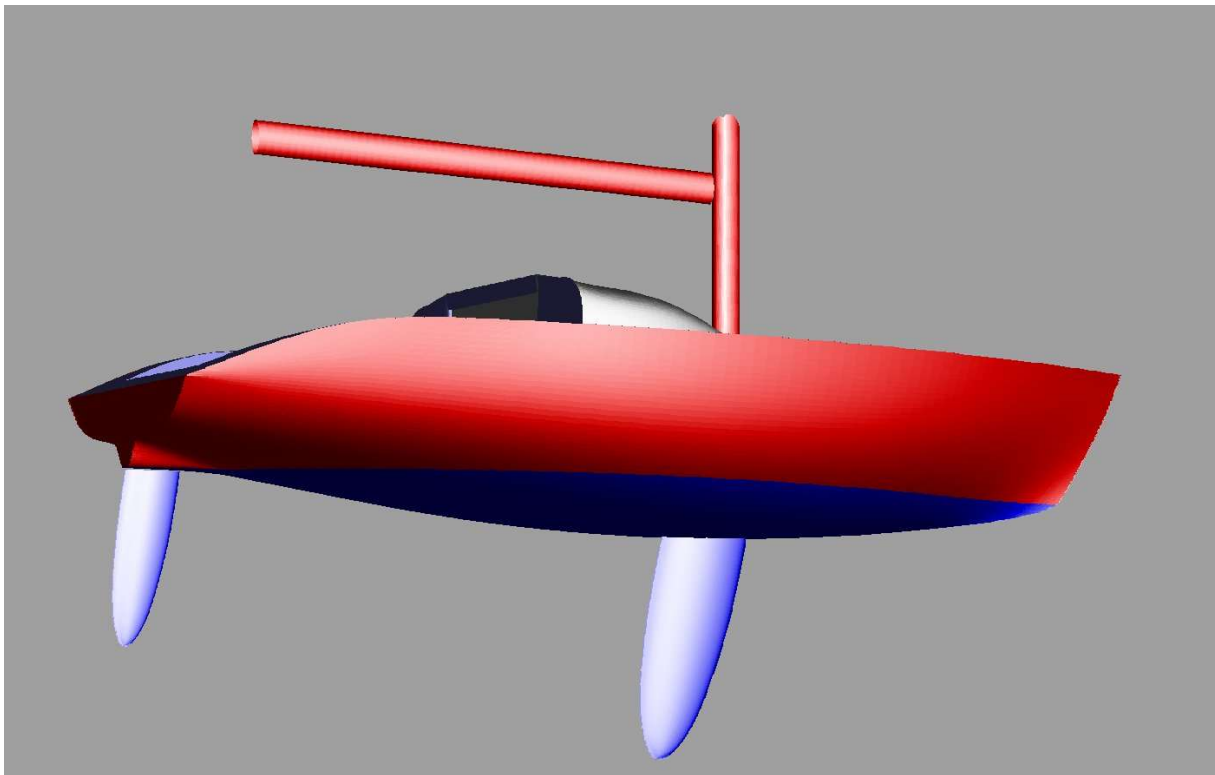
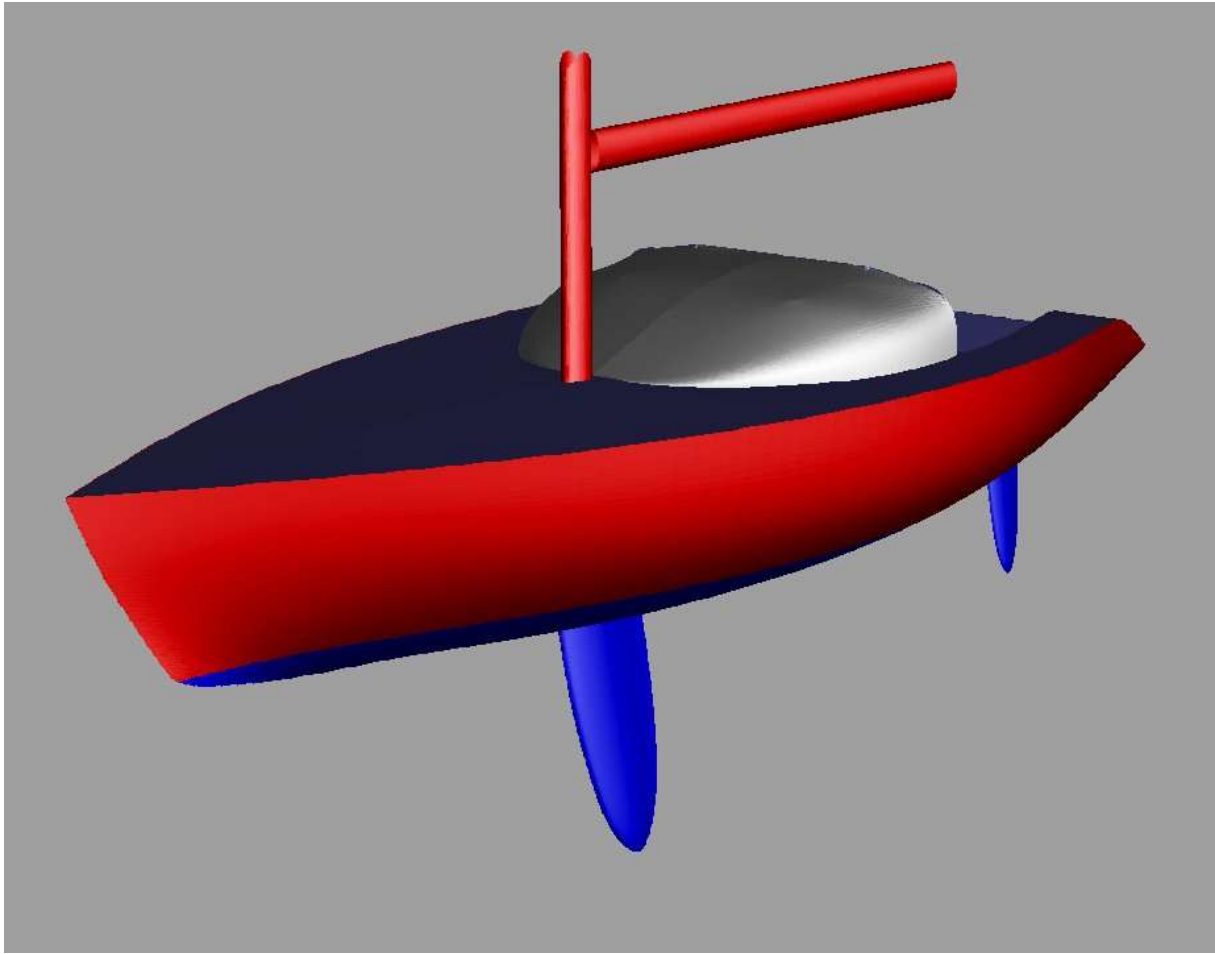
Layer	Area	Thickness	Weight	COG X	COG Y	COG Z
	m ²	mm	tonnes	m	m	m
hull	25.741	35.000	0.450	3.508	0.000	1.930
deck	17.316	30.000	0.260	2.936	0.000	2.417
cabin	3.565	20.000	0.036	3.134	0.000	2.814
Semi ellipse keel NACA6	1.671	0.000	0.770	3.894	0.000	0.833
Semi ellipse rudder NA6	0.580	0.000	0.015	0.096	0.000	1.303
Total	53.461		1.531	3.291	0.000	2.141

NOTE 1: Draft (and all other vertical heights) is measured above the lowest point of the hull! (Z= 0.000)

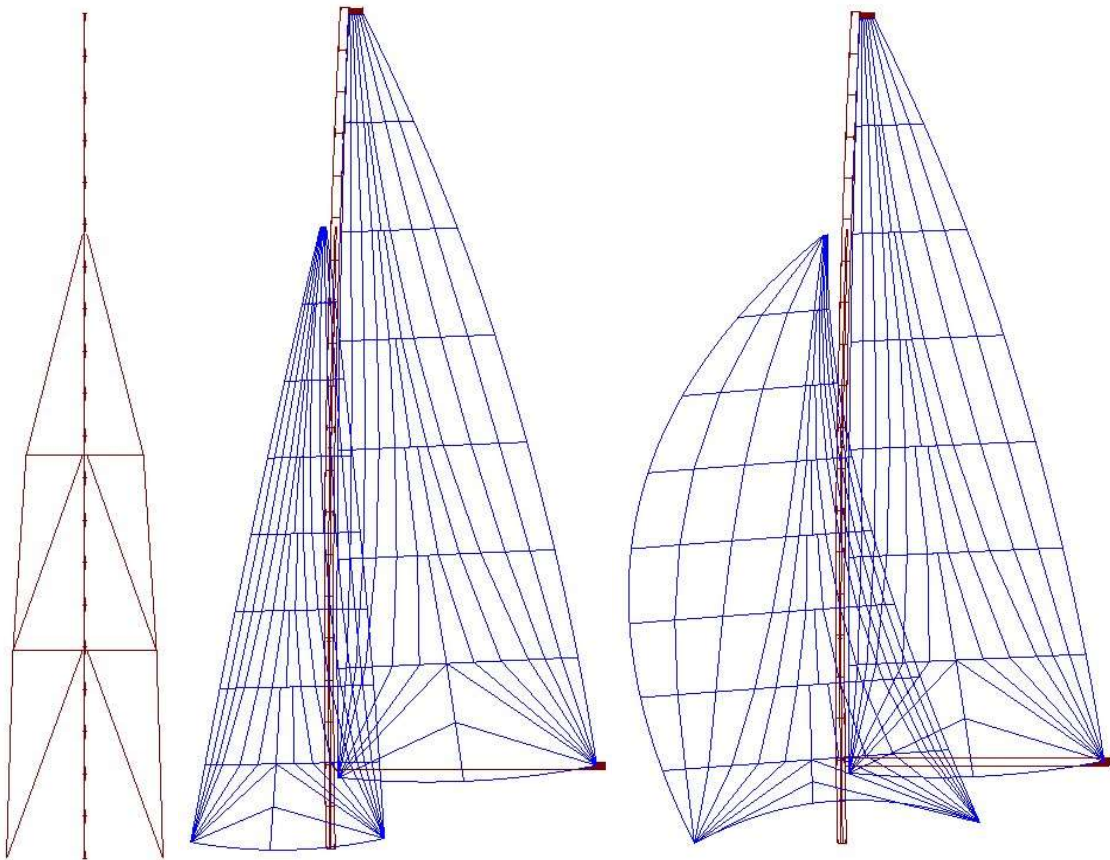
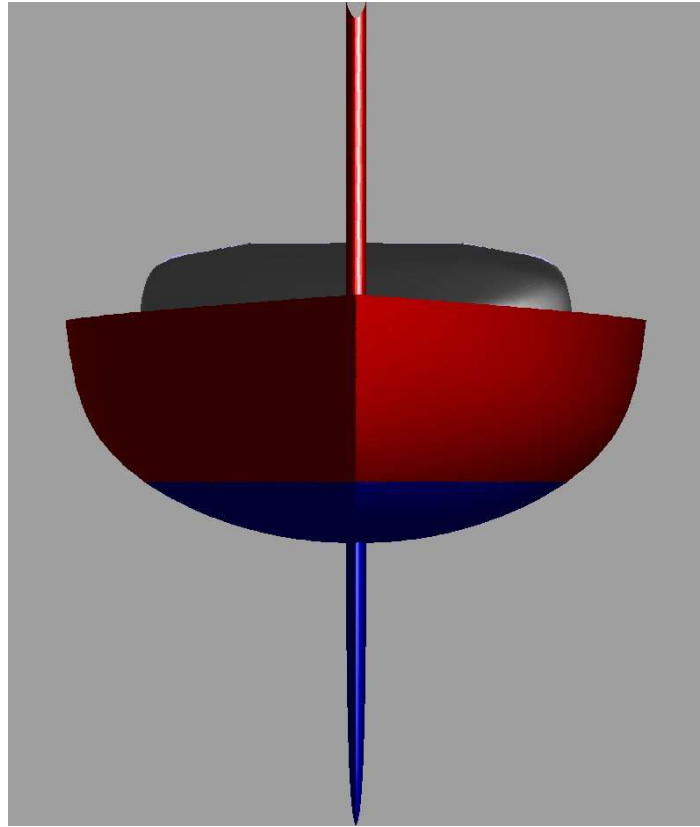
NOTE 2: All calculated coefficients based on actual dimensions of submerged body.



Quarter Tonner #04



Quarter Tonner #04



Main 31m² High Aspect 16m² Code Zero 31m²